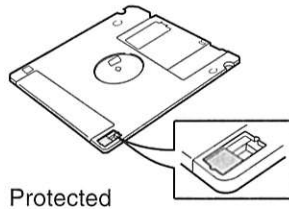


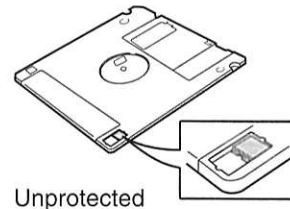
Accidental Erasure Protection

Floppy disks have an erasure protection tab located on the reverse side of the disk, in the bottom right-hand corner. When formatting a disk, make sure that its erasure protection tab is set to “unprotected”.

With the tab window open, formatting and recording are not possible (protected).



With the tab window closed, formatting and recording are possible (unprotected).



Formatting Disks

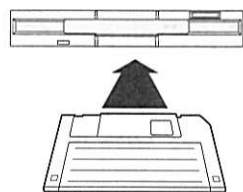
The procedure below allows you to format new unformatted floppy disks and to reformat both the Memory Disk and formatted floppy disks. New floppy disks must be formatted before they can be used with the Disklavier.

Formatting a disk erases all the data previously stored on the disk, so always make sure the disk you are going to format does not contain songs you want to keep.

1 Insert a floppy disk into the disk drive.

Note: Make sure that the floppy disk’s erasure protection tab is set to “unprotected”.

Note: If you want re-format the Memory Disk, do not insert a floppy disk into the disk drive.

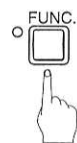


If the disk has not been formatted, the following display appears.

```
UNFORMATTED DISK
```

If the disk contains songs, it might be worth checking them to see if there are any you want to keep.

2 Press the [FUNC.] button.



The FUNC. indicator lights and the Function menu display appears.

```
▶Disk      *MIDI Setup →
*M-Tune    (+, →, ENT)
```

3 With the **▶** cursor next to the Disk option, press the [ENTER] button.



The Disk menu display appears.

```
▶Format      *SongDelete
*SongCopy   *SongSort →
```

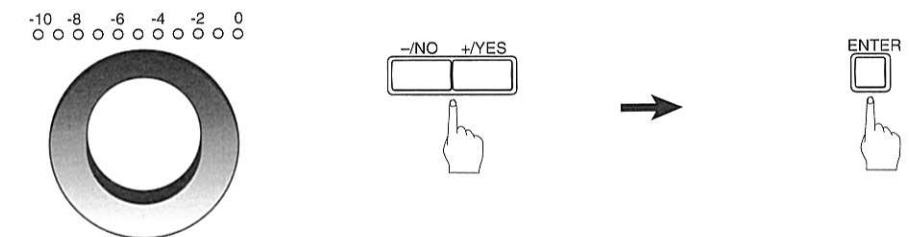
4 With the **▶** cursor next to the Format option, press the [ENTER] button.



The following display appears.

```
[Disk Format]      (-, +)
▶SMF Type Disk    (ENT)
```

5 Use the Dial or the [-/NO] and [+ /YES] buttons to select a disk type: SMF Type Disk or E-SEQ Type Disk. Then press the [ENTER] button.

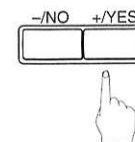


SMF type disk is recommended if you will not be using this disk with other Disklavier models. For more information on disk types, see “Disk Types” on page 63.

A display similar to the following appears.

```
[Disk Format]      SURE?
SMF Type Disk    (YES, NO)
```

6 Press the [+ /YES] button to start the disk formatting process.



If you do not want continue with the formatting process, press the [-/NO] button.

7 Formatting is complete when the following display appears.

```
COMPLETE
PRESS ANY BUTTON
```

Press any button to return to the normal display.